

# GRADE 7

## Term 2

# TEST BUNDLE PREVIEW

CAPS ATP  
ALIGNED

The term 2 test covers term 2 topics, and the June test covers both term 1 and 2 topics.



# Grade 7 English HL Term 2 Test

## QUESTION 1: READING COMPREHENSION

1. Read the following passage and answer the questions that follow.

### The Secret Garden

Mary Lennox was a spoiled and disagreeable child, accustomed to the hot and dry landscapes of India. She had always been waited on by servants and had never needed to be kind or friendly. However, when a sudden cholera outbreak took the lives of her parents and the household staff, Mary was left alone. She was sent to England to live with her reclusive uncle, Mr. Archibald Craven, at Misselthwaite Manor, a vast and gloomy estate on the Yorkshire moors.



The change was shocking. The damp, grey weather, the unfamiliar sounds of the wind howling over the moors, and the eerie silence of the grand house made Mary feel isolated and miserable. The few servants she encountered barely spoke to her, and she was left to her own devices.

One day, while exploring the estate, Mary stumbled upon a hidden, walled garden. The garden, once a vibrant and lush sanctuary, was now a tangled mess of weeds and thorns, its beauty long forgotten and abandoned. Curious and determined, she searched for the key and, with the help of an old gardener named Bob, she found it buried beneath some fallen leaves.

Eager to restore the garden to its former glory, Mary enlisted the help of a local boy with an extraordinary ability to communicate with animals, Colin, who had been confined to his bed due to a mysterious illness. To believe he was too weak to walk, but as he spent more time in the garden, he discovered a strength he never knew he had.

Together, they worked tirelessly, clearing away the weeds and debris, neglecting plants, and bringing in new ones to breathe life back into barren patches of earth burst forth with colourful blooms, and the sweet scent of flowers. The garden, which had once been a place of neglect, became a symbol of hope, healing, and transformation.

As the garden blossomed, so did Mary, Colin, and even the once gloomy and sour and unfriendly, became kinder and happier. Colin, once weak and frail, grew stronger and more confident. Even Mr. Craven, upon discovering his remarkable recovery, found joy again. The beauty of the garden ministered to their souls, proving that nature had the power to heal not only the body but the soul.

©DesigningMinds

1.12. Choose the correct homophone: (their, there, they)  
The \_\_\_\_\_ garden was abandoned for many years.

1.13. Identify the figurative language used in the sentence:  
The once barren patches of earth burst forth with life.

## QUESTION 2: VISUAL

2. Have a look at the advert and answer the questions.



2.1. What product is being advertised in the image? (1)

2.2. What is the slogan of the advertisement? (1)

2.3. What visual techniques are used to make the advertisement appealing? Name two. (2)

©DesigningMinds

## QUESTION 4: LANGUAGE

4. Answer the following language questions.

4.1. Rewrite the sentence by changing the gender of the underlined words: (1)  
The actor married a prince in the royal palace.

4.2. Underline the demonstrative adjective/s in the sentence: (2)  
This book belongs to me, but that one is yours.

4.3. Complete the sentence with a suitable relative adjective: (1)  
She wore a dress \_\_\_\_\_ colour was bright red.

4.4. Rewrite in indirect speech: (2)  
Sarah said, "I will visit my grandmother tomorrow."

4.5. Identify whether the sentence is simple or compound: (1)  
She completed her homework, and she went to bed.  
simple    compound

4.6. Provide an antonym for the word "courageous": (1)

4.7. Explain the figurative meaning of the idiom: (1)  
He let the cat out of the bag.

4.8. Rewrite the sentence and insert a colon (:) in the correct place: (1)  
I have three favourite fruits apples bananas and grapes.

4.9. Circle the preposition of place in the sentence: (1)  
The book is on the table.

4.10. Choose the correct numerical adjective: (1)  
She finished \_\_\_\_\_ in the race.  
a) Three  
b) Third

4.11. Change the sentence from active to passive voice: (2)  
The chef prepared a delicious meal.

©DesigningMinds

7

- Reading comprehension (20)
- Visual text (10)
- Summary (10)
- Language structures & conventions (20)

Test Total: 60

Number of pages: 10

Dm

# Grade 7 English HL June Test

## QUESTION 1: READING COMPREHENSION

1. Read the story below and answer the questions.

### The Black Seadevil Anglerfish

Deep beneath the ocean's surface, in the dark and cold depths, lives one of the most mysterious creatures of the sea—the Black Seadevil Anglerfish. This deep-sea predator is named after its frightening appearance and its ability to lure prey using a glowing lure attached to its head.



The Black Seadevil has a round, dark body with sharp, needle-like teeth. It is usually small, with females growing up to 18 cm long, while males are much smaller. Unlike most fish, the Black Seadevil does not rely on eyesight to hunt. Instead, it uses bioluminescence, a natural glow, to attract prey in the complete darkness of the deep sea. The lure, known as an esca, dangles from its head and emits light to trick smaller fish into coming closer.

One of the most unusual things about the Black Seadevil is how it reproduces. The tiny male attaches himself to a much larger female by biting into her skin. Over time, his body fuses with hers, and he depends on her for survival, receiving nutrients through their shared bloodstream. In return, the male provides sperm whenever the female is ready to lay eggs. This strange relationship is necessary because finding a mate in the deep ocean is extremely difficult.

The Black Seadevil lives at depths of 600 to 1,500 meters, where no sunlight reaches. The pressure is intense, and food is scarce, so the fish must be an efficient hunter. It is known for swallowing prey whole, even those nearly its own size.

Scientists still have much to learn about the Black Seadevil, as it is so wild. However, its unique adaptations make it one of the most fascinating creatures in the ocean.

- 1.1. What is the main feature the Black Seadevil uses to attract prey?
- Its sharp teeth
  - Its glowing lure
  - Its large eyes
  - Its fast swimming speed
- 1.2. Why do male Black Seadevils attach themselves to females?
- To help the female hunt
  - To survive in the deep sea
  - To fuse with the female and reproduce
  - To steal food from the female

©DesigningMinds

## QUESTION 2: VISUAL TEXT

2. Look at the newspaper page and answer the questions.

NEWSLETTER **The Ocean**

# DEEP MY

## RARE DEEP-SEA MONSTER SPOTTED

BY JASON HENRY | MARINE SCIENCE CORP

### UNUSUAL SIGHTING OF THE BLACK SEADEVIL ANGLERFISH LEAVES SCIENTISTS AMAZED

Marine biologists were stunned when a Black Seadevil Anglerfish, usually found 600 to 1,500 meters deep, was seen near the ocean's surface near the Canary Islands.

This eerie fish has a round, black body, sharp teeth, and a glowing lure (esca) to attract prey in total darkness. Instead of chasing food, it stays still and lures prey close before attacking. Tiny males fuse to the female, sharing nutrients for reproduction.

Experts suspect that changing ocean temperatures or currents may have forced the fish to rise. Marine biologist Dr. Rebecca Holmes noted, "This is a rare sighting. Climate change could be affecting deep-sea life."

What's Next?  
Scientists are analyzing the footage to understand this unusual event. Conservationists stress the need to protect deep-sea habitats, as these creatures are highly sensitive to environmental changes.

Who knows what other deep-sea mysteries will surface next?

25TH JULY, 2025 PAGE 01

2.1. What is the name of the newspaper in the article? (1)

\_\_\_\_\_

2.2. Identify the headline and subheading in the article. (2)

Headline: \_\_\_\_\_

Subheading: \_\_\_\_\_

2.3. Who wrote the article? (1)

\_\_\_\_\_

©DesigningMinds

5

## QUESTION 4: LANGUAGE STRUCTURES & CONVENTIONS

4. Answer the following language questions.

4.1. Underline the adjective in the sentence below. (1)

The enormous whale swam gracefully through the deep ocean.

4.2. Underline the verb in the sentence below. (1)

The scientist carefully examined the rare deep-sea fish.

4.3. Choose the correct pronoun to complete the sentence. (1)

Sam and (me / I) went to the marine biology museum.

4.4. Rewrite the sentence in the future tense. (1)

The diver explores the coral reef.

\_\_\_\_\_

4.5. Add the correct punctuation to the sentence below. (2)

whats the name of that strange fish asked sarah

\_\_\_\_\_

4.6. Rewrite the sentence in indirect speech. (1)

Mark said, "I love reading about deep-sea creatures."

\_\_\_\_\_

4.7. Identify whether the sentence below is a statement, question, command, or exclamation. Colour in the correct box. (1)

Wow! That anglerfish looks terrifying!

statement	question	command	exclamation

4.8. Rewrite the following statement as a question. (1)

The marine biologist studies ocean creatures.

\_\_\_\_\_

4.9. What type of figurative language is used in the sentence below? (1)

The fish's teeth were as sharp as knives.

- Metaphor
- Simile
- Personification
- Hyperbole

©DesigningMinds

9

- Reading comprehension (20)
- Visual text (10)
- Summary (10)
- Language structures & conventions (20)

Test Total: 60

Number of pages: 12

Dm

# Grade 7 Afrikaans FAL Term 2 Test

## VRAAG 1: LITERÊRE / NIE -LITERÊRE TEKS (20)

1. Lees die kortverhaal en beantwoord die vrae wat volg.

### Die Verdwynende Skooltas



Op 'n oggend soos enige ander het Hendrik sy skooltas gepak en skool toe vertrek. Sy tas was 'n troue metgesel, al het dit al 'n paar stukkie en stukkes. Maar vandag sou iets vreemds gebeur.

Toe die klok lui vir eerste pouse, het Hendrik gesien dat sy tas nie daar was waar hy dit gelos het nie. Hy het die hele klas deursoek, maar daar was geen teken van sy tas nie. Paniek het begin om hom te omvou.

Hy het na die onderwyser gehardloop en haar vertel van sy vermiste tas. Saam het hulle die skool deurgekyk, maar dit was nêrens te vinde. Uiteindelik het hulle by die sekretaresse aangekom, wat 'n tas in die verloorkamer gevind het - 'n tas wat soortgelyk aan Hendrik s'n was, maar met 'n ander naam op.

Toe die tas oopgemaak word, was dit propvol met boeke en papier hulle was van Hendrik nie. Dit was 'n raaisel, en dit het die res van klaskamer gespoek.

Gelukkig het Hendrik aan die einde van die dag sy eie tas teruggel gebeurtenis het 'n raaisel bly - hoe het 'n vreemde tas met 'n and daarin in die skool beland?

1.1. Wat is die title van die kortverhaal?

\_\_\_\_\_

1.2. Wat het Hendrik elke oggend gedoen voor skool?

\_\_\_\_\_

1.3. Drie karakters in die storie is \_\_\_\_\_ e

\_\_\_\_\_

1.4. Was Hendrik se skooltas nuut? Gee 'n rede vir jou antwoord.

\_\_\_\_\_

© DesigningMinds

## VRAAG 4: TAALSTRUKTURE EN KONVENSIES (20)

4. Antwoord die volgende taal vrae.

4.1. Skryf die volgende woorde in alfabetiese volgorde:

gelos, gesien, gehardloop, gebeur.

(1)

\_\_\_\_\_

4.2. Verdeel die volgende word in lettergrepe en dui aan of die lettergrepe oop of geslote is.

(2)

Verdwynende

\_\_\_\_\_

4.3. Skryf die volgende sin in die tydvorm neer wat aangedui word.

(2)

Sy tas is verlore.

Verlede tyd: \_\_\_\_\_

Toekomstige tyd: \_\_\_\_\_

4.4. Gee 'n sinoniem vir "verdwynende".

(1)

\_\_\_\_\_

4.5. Wat is die antoniem vir "vandag"?

(1)

\_\_\_\_\_

4.6. Kies die regte spelling van die word tussen hakies.

(1)

Sy ma het elke ( dag / daag ) vir hom gesê om seker te maak dat tas is veilig.

4.7. Kies die korrekte voornaamwoord vir die volgende sin.

(1)

Hendrik het \_\_\_\_\_ les geleer.

- a) Haar
- b) Hy
- c) Sy
- d) Hom

4.8. Wat is die onderwerp, gesegde, en voorwerp in die volgende sin:

(3)

Hendrik het die hele klas deursoek.

Onderwerp: \_\_\_\_\_

Gesegde: \_\_\_\_\_

© DesigningMinds

7

## VRAAG 2: VISUELE

2. Bestudeer die advertensie en beantwoord die v



2.1. Wat adverteer die prentjie?

(1)

\_\_\_\_\_

2.2. Wat sien jy eerste in die advertensie raak? Dink visueel.

(1)

\_\_\_\_\_

2.3. Omkring die korrekte antwoord.

(1)

© DesigningMinds

4

- Begripstoets (20)
- Visuele teks (10)
- Opsomming (10)
- Taalwerk (20)

Test Total: 60

Number of pages: 11



# Grade 7 Afrikaans FAL June Test

## VRAAG 1: LITERÊRE / NIE-LITERÊRE TEKS (20)

I. Lees die teks en beantwoord die vrae wat volg.

### WOORDESKATLYS

Afrikaans Woord	Engelse Betekenis
Ruimtetuig	Spacecraft
Tegniese fout	Technical fault
Landingstelsel	Landing system
Hitteskild	Heat shield
Voorraad	Supplies
Ruimtevaarders	Astronauts
Reddingsending	Rescue mission
Eksperimente	Experiments
Grondbeheer	Ground control
Gevolge	Consequences

### RUIMTEVAARDERS VASGEVANG IN DIE RUIMTE!

'n Onsekere Wagte vir Vier Ruimtevaarders

Vier ruimtevaarders is tans vasgevang in die ruimte nadat hul ruimtetuig, Orion-7, 'n ernstige tegniese fout ontwikkel het. Die bemanning bestaan uit Commander James Carter en Dr. Emily Wong van die Verenigde State (USA), Sergei Ivanov van Rusland, en Taro Nakamura van Japan. Hierna die Internasionale Ruimtestasie (ISS) vertrek as deel van 'n missie om nuwe tegnologie vir ruimtereise te toets.

Volgens NASA het 'n fout in die landingstelsel veroorsaak dat hul terug na die Aarde vertraag word. Die ruimtetuig moes op 5 Maart 2025 land, maar hulle het probleme met die hitteskild wat veroorsaak dat hulle nie veilig kan land nie.

NASA en internasionale ruimteagentskappe, insluitend Roscosmos, is saam om 'n oplossing te vind. Daar is genoeg voorraad, soos suurstof, om die bemanning vir sowat drie weke aan die lewe te hou, maar 'n reddingsending is noodsaaklik. NASA oorweeg tans 'n reddingsending waarin 'n ander ruimtetuig sal word om die bemanning veilig terug te bring.

Terwyl die wêreld met spanning wag op 'n uitkoms, bly die ruimtevaart professioneel. Hulle kommunikeer gereeld met grondbeheer en doen eksperimente en oefeninge te doen om fiks en gefokus te bly. "Ons ingenieurs en ons span op Aarde," het Bevelvoerder Carter in 'n oorsending gesê.



© DesigningMinds

## VRAAG 4: TAALSTRUKTURE EN KONVENSIËS (20)

4. Antwoord die volgende taal vrae.

4.1. Skryf die eienaam in die sin: (1)

Die stad Kaapstad is een van die mooiste in Suid-Afrika.

4.2. Skryf die meervoud van die woord "dag." (1)

4.3. Skryf die enkelvoud van "tasse." (1)

4.4. Kies die korrekte byvoeglike naamwoord vir die sin: (1)

Die (skoon/skoonste) kombuis ruik lekker.

4.5. Kies die korrekte aanwysende voornaamwoord: (1)

(Hierdie/Daardie) hond behoort aan my.

4.6. Skryf die sin in indirekte rede: (2)

Jan sê: "Ek hou van sokker."

4.7. Skryf die sin in direkte rede: (2)

Lisa sê dat sy die toets maklik gevind het.

4.8. Is die volgende sin enkelvoudig, saamgestel of veelvoudig? (1)

Ek lees 'n boek en my vriend luister na musiek.

4.9. Verander die volgende sin na die verlede tyd: (1)

Ons speel buite.

4.10. Skryf die sin in lydende vorm: (2)

Die seun breek die venster.

4.11. Gee die antoniem vir "droog." (1)

1.12. Vul die ontbrekende leestekens in:

Die ruimtevaarders is kalm hulle werk hard om fik

1.13. Punktueer die volgende sin.

die ruimtevaarders wag vir die reddingspoging wa

## VRAAG 2: VISUELE

2. Bestudeer die advertensie en beantwoord die vrae.



2.1. Wie is die teikengehoor van hierdie advertensie? (1)

- a) Kat-eienaars
- b) Mense wat honde se tande wil versorg
- c) Mense wat troeteldiere verkoop
- d) Honde wat hul eie tande wil borsel

2.2. Wat is die doel van hierdie advertensie? (1)

© DesigningMinds

4

- Begripstoets (20)
- Visuele teks (10)
- Opsomming (10)
- Taalwerk (20)

Test Total: 60

Number of pages: 10

Dm

# Grade 7 Life Orientation Term 2 Test

## QUESTION 5

5. Categorize the following careers into its career field. Write the career next to the correct career field.

Advocate singer teacher bricklayer  
medical researcher



Career field	Career
Health services	5.1.
Education and support services	5.2.
Performing arts	5.3.
Law	5.4.
Building and construction	5.5.

[5]

## QUESTION 6

6. Answer the following questions on abuse.

6.1 Explain why the following situations may be threatening or risky for a child.

6.1.1 Growing up in an abusive family:

-----  
-----

6.1.2 A parent drinking too much alcohol or taking drugs:

-----  
-----

©DesigningMinds

## QUESTION 2

2. Fill in the missing words.

2.1. The South African Constitution guarantees the rights of all individuals.

2.2. Responsible behavior includes respecting the rights of others.

2.3. Any type of injury to you that causes pain, loss of property, or damage to your reputation is called \_\_\_\_\_.

2.4. A \_\_\_\_\_ is the person who is being interviewed.

2.5. \_\_\_\_\_ is when people who are not allowed to have proper access to food, clothing, and medical care.



[5]

## QUESTION 3

3. Explain the following concepts:

3.1. Abuse (2)

-----  
-----

3.2. Career fields (2)

-----  
-----

©DesigningMinds

3

## MEMORANDUM GRADE 7 LO TERM 2 TEST

QUESTION	ANSWER	MARKS	LEARNERS MARK
<b>QUESTION 1:</b>			
1.1.	b) By being aware and assertive	1	
1.2.	c) Decreased trust in others	1	
1.3.	c) From places of protection and safety	1	
1.4.	c) Pressure to skip school and engage in risky behavior	1	
1.5.	b) By standing up for their values and beliefs	1	
		Total: ____/5	
<b>QUESTION 2:</b>			
2.1.	Human rights	1	
2.2.	Rights	1	
2.3.	Physical abuse	1	
2.4.	Candidate	1	
2.5.	Neglect	1	
		Total: ____/5	
<b>QUESTION 3:</b>			
3.1.	Abuse is when someone hurts you or treats you badly. This can be physical (like hitting), emotional (like saying mean things), or neglect (like not giving you enough food or care). Abuse is wrong and can hurt you physically and emotionally.	2	
3.2.	Career fields are different types of jobs or professions that people can choose to work in. Each career field has its own set of skills, responsibilities, and opportunities. For example, some career fields include teaching, nursing, engineering, and business.	2	
3.3.	Reconciliation means making peace or resolving conflicts. It's about finding a way to get along with someone after there has been a disagreement or conflict. Reconciliation involves understanding each other's feelings, apologizing if necessary, and finding a way to move forward positively.	2	
3.4.	Peer pressure is the influence that peers (people of the same age or social group) can have on each other, often leading individuals to change their attitudes, behaviors, or actions to conform to the group's norms or expectations.	2	
		Total: ____/8	
<b>QUESTION 4:</b>			
4.1.	D	1	

©DesigningMinds

8

- Human rights
- Abuse
- Career fields

Test Total: 40

Number of pages: 10



# Grade 7 Life Orientation June Test

## QUESTION 2. DEFINITIONS

2. Provide a definition for each of the following:

2.1 Hormones: (2)

\_\_\_\_\_

2.2 Physical abuse: (2)

\_\_\_\_\_

2.3 Intimidate: (2)

\_\_\_\_\_

2.5 Peer pressure: (2)

\_\_\_\_\_

(8)

## QUESTION 3. COLUMN MATCH

3. Match column A to column B. Write only the letter i

Column A		
3.1. Childline		a) A negative abuser
3.2. Anger		b) Respect an
3.3. Counsellors		c) Stand up fo on one's right
3.4. Assertive		d) 080005555
		e) Someone tl victim of abus
		e) 080009988
3.1.	3.2.	3.3.

©DesigningMinds

5.1.3 The older sister bringing lots of friends over, often. T  
alcohol and watching YouTube before they fall asleep in t



5.2 Read the scenario below and answer the questions t



Amber loved spending time on the internet, which sites she visited, so she often went to a shopping mall with a 13-year-old boy named Charles. They spoke on the internet and Charles agreed to meet in a shopping mall. At the meeting place, Amber realized that Charles was only thirteen. She was very scared as she was alone, and she had not told anyone where she was going.

5.2.1 What mistake did Amber make when going onto the internet? (1)

\_\_\_\_\_

5.2.2 What could Amber do, once she realized that she was not safe in the shopping mall? Provide a realistic answer. (1)

\_\_\_\_\_

5.2.3. Amber's parents needed to take responsibility for this incident. In what way was the parents irresponsible? (1)

\_\_\_\_\_

5.2.4. In what way was Amber irresponsible? (1)

\_\_\_\_\_

(10)

©DesigningMinds

5

## QUESTION 4. CASE STUDY

4. Read the case study carefully before you answer the questions (10)

Lungile and Candice are classmates who used to be close friends. Recently, they had a disagreement over a group project and now they are not speaking to each other. The tension between them is affecting the entire group's ability to work together effectively.



4.1. What are some possible causes of conflict between Lungile and Candice? (2)

\_\_\_\_\_

4.2. How do you think the conflict is impacting their friendship and the group's project? (4)

\_\_\_\_\_

\_\_\_\_\_

4.3. What strategies could Lungile and Candice use to resolve their conflict? (4)

\_\_\_\_\_

\_\_\_\_\_

(10)

## QUESTION 5. SHORT ANSWERS

5. Answer the following questions on abuse.

5.1 Explain why the following situations may be threatening or risky to a young child.

5.1.1 Growing up in an abusive family: (2)

\_\_\_\_\_

5.1.2 A parent drinking too much alcohol or taking drugs: (2)

\_\_\_\_\_

\_\_\_\_\_

©DesigningMinds

4

- Self-image
- Puberty
- Emotions
- Peer pressure
- Human rights
- Abuse
- Career fields

Test Total: 70

Number of pages: 14



# Grade 7 History Term 2 Test

## QUESTION 2

2. Indicate whether each statement is true or false. Place a cross over the correct box. (4)
- 2.1. The transatlantic slave trade had a positive impact on the economies of West Africa. (1)  
 True  False
- 2.2. Harriet Tubman was a slave who helped others escape to freedom. (1)  
 True  False
- 2.3. Slaves who could read and write, sold very well. (1)  
 True  False
- 2.4. Molasses was used to make different types of alcoholic drinks. (1)  
 True  False

(4)

## QUESTION 3

3. Match the words in column A with the correct meaning from column B. Write only the letter (a-e) in the grid below. (5)

COLUMN A	COLUMN B
3.1. Sluggishness	a) A person who wanted to get rid of s
3.2. Abolitionist	b) To go against a government by wor
3.3. Indifference	c) Act of doing everything very slowly
3.4. Martyr	d) A person who dies for a worthwhile c
3.5. Treason	e) Not caring about anything

3.1.	3.2.	3.3.	3.4.
------	------	------	------



©DesigningMinds

## QUESTION 4

4. Fill in the correct answers in the blank spaces. (4)
- 4.1. Homes that were used by runaway slaves \_\_\_\_\_.
- 4.2. The ship that slaves took over was called \_\_\_\_\_.
- 4.3. The coded name given to runaway slaves was \_\_\_\_\_.
- 4.4. The anti-slavery protester who is remembered is \_\_\_\_\_.
- 4.5. The slave who used the Underground Railroad was \_\_\_\_\_.

## QUESTION 5

5. Answer each question concisely. (4)
- 5.1. Read the extract and answer the following question: Turner's revolt in 1831.

"The Underground Railroad was a network of safe houses and abolitionist supporters that assisted enslaved individuals on their journey to freedom. Harriet Tubman was one of the most prominent conductors who made multiple journeys to guide others to safety."

- 5.2. How did the Underground Railroad help enslaved individuals? (2)

(4)

©DesigningMinds

4

## MEMORANDUM GR 7 HISTORY TERM 2 TEST

QUESTION	ANSWER	MARKS	LEARNER'S MARK
<b>QUESTION 1:</b>			
1.1.	c) West Africa		
1.2.	b) To increase profits		
1.3.	b) By ship		
1.4.	b) Agriculture		
1.5.	d) All of the above		
		Total: ____/5	
<b>QUESTION 2:</b>			
2.1.	False		
2.2.	True		
2.3.	True		
2.4.	True		
		Total: ____/4	
<b>QUESTION 3:</b>			
3.1.	C		
3.2.	A		
3.3.	E		
3.4.	D		
3.5.	B		
		Total: ____/5	
<b>QUESTION 4:</b>			
4.1.	Stations		
4.2.	Armistad		
4.3.	Passengers		
4.4.	Brown		
4.5.	Harriet Tubman		
		Total: ____/5	
<b>QUESTION 5:</b>			
5.1.	Nat Turner's revolt was significant because it was one of the largest slave rebellions in the United States, leading to stricter slave laws.	2	
5.2.	The Underground Railroad was a network of secret routes and safe houses used to help enslaved individuals escape to free states or Canada.	2	
		Total: ____/4	
<b>QUESTION 6:</b>			

©DesigningMinds

8

- The transatlantic slave trade (focus on the nature & impact of the slave trade between West Africa & the American South)

Test Total: 50

Number of pages: 10

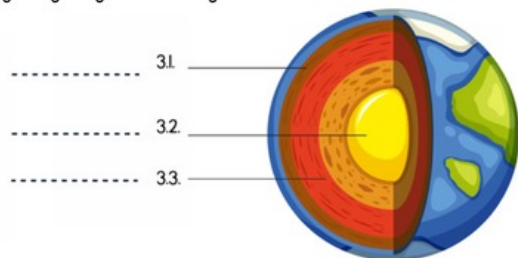
Dm



# Grade 7 Geography Term 2 Test

## QUESTION 3

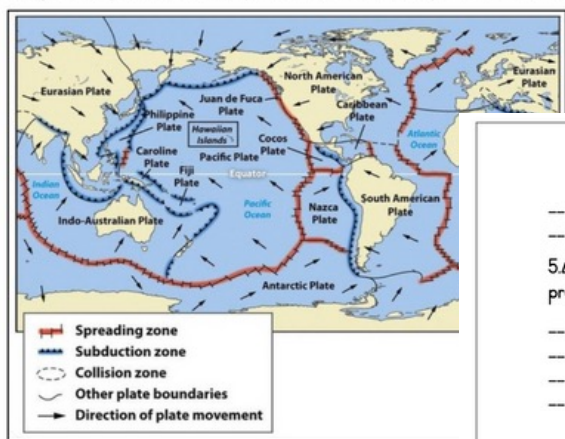
3. Study the following diagram of the Earth's structure. Then, identify the various layers by filling in the missing labels.



[3]

## QUESTION 4

4. Study the map of the tectonic plates and answer the questions which follow.



<https://za.pinterest.com/pin/47100912150203213/>

- 4.1. Which continent is relatively free from natural disaster?

©DesigningMinds

## MEMORANDUM GR 7 GEOGRAPHY TERM 2 TEST

QUESTION	ANSWER	MARKS	LEARNERS MARK
<b>QUESTION 1:</b>			
1.1.	a) Earthquake	1	
1.2.	b) Magma	1	
1.3.	c) Tsunamis	1	
1.4.	a) A mountain that erupts lava	1	
1.5.	d) All of the above	1	
1.6.	c) Crust	1	
1.7.	c) Along plate boundaries	1	
1.8.	d) Improved infrastructure	1	
		Total: _____/8	

## QUESTION 2:

2.1.	True	1	
2.2.	True	1	
2.3.	True	1	
2.4.	True	1	
2.5.	False	1	
2.6.	True	1	
2.7.	False	1	
		Total: _____/7	

## QUESTION 3:

3.1.	Crust	1	
3.2.	Core	1	
3.3.	Mantle	1	
		Total: _____/3	

## QUESTION 4:

4.1.	Australia	1	
4.2.	No tectonic plates close to South Africa.	1	
4.3.	The central core of Earth is very hot with rock temperatures over 5 000°C. This great heat causes convection currents in the rock, which move through Earth's mantle. (Any two)	2	
4.4.	How these plates move: They slide past one another. Example: San Andreas Fault.	2	
4.5.	Magma is molten rock found beneath the Earth's surface. It is formed from the melting of rocks in the Earth's mantle and crust due to high temperatures and pressure.	2	

©DesigningMinds

9

- Structure of the Earth
- Volcanoes
- Earthquakes
- Floods

5.4. What lessons can be learned from the March preparedness and response?  
 \_\_\_\_\_  
 \_\_\_\_\_  
 \_\_\_\_\_  
 \_\_\_\_\_

## QUESTION 6

6. Choose the answers in the word box below sentence.

focus, sinkholes, pressure

- 6.1 When two plates move towards or away from of \_\_\_\_\_ can cause earthquakes.
- 6.2 The point under the ground where the earthquake originates is called the \_\_\_\_\_ (1)
- 6.3 A \_\_\_\_\_ is a slight or mild earthquake that usually causes little or no damage. (1)
- 6.4 Earthquakes cause damage to buildings, roads, bridges, \_\_\_\_\_ and rocks falls often kill thousands of people. (1)
- 6.5 Earthquakes cause many problems and the effects are devastating. Describe the effects of an earthquake on buildings and infrastructure. (6)
- Building  
 \_\_\_\_\_  
 \_\_\_\_\_
- Infrastructure  
 \_\_\_\_\_  
 \_\_\_\_\_

(10)

©DesigningMinds

7

Test Total: 50

Number of pages: 11



# Grade 7 Geography June Test

## QUESTION 3: MAP WORK

3. Study the map below and answer the questions that follow. (5)



3.1. What is the big hole (The Big Hole) known for? (1)

-----

3.2. Give the cross-reference of the following:

- a) Kimberley City Centre: -----  
 b) Greenside: -----

3.3. What does the following symbol represent on the map:



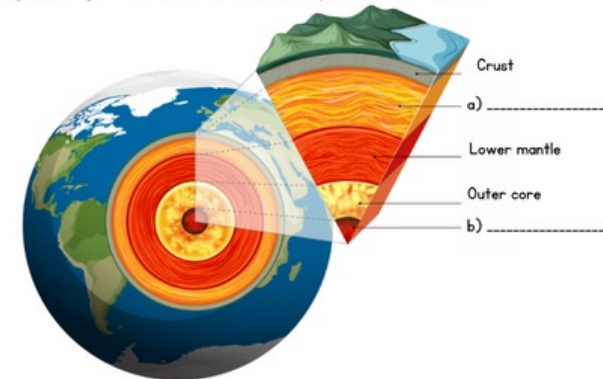
3.4. If you continue driving North on the N12. Where will you go?  
 -----

3.5. What type of scale is used on this map?  
 -----

©DesigningMinds

## QUESTION 7: STRUCTURE OF THE EARTH

7. Study the diagram below and answer the questions that follow.



7.1. Fill in the missing labels on the diagram below. (2)

- a) -----  
 b) -----

7.2. How many kilometres in thickness is the crust of the Earth measured? (1)

-----

7.3. What minerals does the upper mantle consist of? Name any 2. (2)

-----

7.4. Which part of the Earth is the hottest? (1)

-----

(6)

©DesigningMinds

7

## SECTION B: VOLCANOES. EARTH

### QUESTION 4: EARTH

4. Read the following CNN report about a volcano and answer the questions that follow.

#### Mount Etna Erupts Again, Spewing Lava and Ash

One of Europe's most active volcanoes, Mount Etna, sent molten lava and thick clouds of ash into the sky on Tuesday, sending concern among local authorities as the volcanic activity threatened nearby towns.

The eruption began after a series of small earthquakes and magma movement beneath the surface. Italy's Volcanology (INGV) recorded over 40 tremors before the eruption.

Videos from the site showed glowing rivers of lava and thunderous explosions echoed across the landscape. The fissure stretched 2.5 kilometers, releasing large amounts of ash into the atmosphere.

Residents of Catania and surrounding villages were advised to stay indoors due to falling ash and poor air quality. The eruption temporarily shut down Catania's airport, as volcanic ash posed a danger to aircraft.

Mount Etna, standing at 3,357 meters, has erupted frequently for thousands of years. Scientists monitoring the volcano noted that this eruption was stronger than previous ones due to increased pressure inside the magma chamber.

Despite the intensity, no injuries were reported, and emergency teams worked quickly to clear roads and assist affected residents.



4.1. Where did this volcanic eruption take place? (1)

-----

4.2. Why do you think an earthquake was felt before the volcano erupted? (1)

-----

4.3. How long was the fissure that the lava was shooting out of? (1)

-----

©DesigningMinds

4

- Map skills
- Structure of the Earth
- Volcanoes
- Earthquakes
- Floods

Test Total: 50

Number of pages: 11

Dm

# Grade 7 Natural Science Term 2 Test

## QUESTION 2

2. Match the term to its correct definition. (3)

Term	Definition
2.1. Acids	A. Have a pH greater than 7
2.2. Bases	B. Have a pH of 7
2.3. Neutrals	C. Turn blue litmus paper red

2.1.	2.2.	2.3.
------	------	------

(3)

## QUESTION 3

3. Provide brief answers to the following questions.

3.1. Explain why it is important to consider properties like strength and flexibility when choosing materials for a particular use. (2)

-----  
 -----  
 -----

3.2. Describe one method of physical separation and give an example of when it might be used.

-----  
 -----  
 -----

3.3. What are the four different tastes that the human tongue can advantageously be able to distinguish these tastes?

-----  
 -----  
 -----



© DesigningMinds

- The Periodic Table
- Properties of materials
- Separating mixtures
- Acids, bases and neutrals

## QUESTION 7

7.1. Look carefully at the Periodic table and answer the questions that follow.

The Periodic Table of the Elements

- 7.1.1. The elements in the Periodic table are arranged into three main categories, namely metals, semi-metals and \_\_\_\_\_ (1)
- 7.1.2. Look at the left side of the Periodic table. Find number 20. Give the name of the element in number 20. (1)
- 
- 7.1.3. Is this element a metal/semi-metal or alkali metal? (1)
- 
- 7.1.4. Give this element's atomic number. (1)
- 
- 7.1.5. What is the function of this element in the human body? (1)
- 

© DesigningMinds

6

## QUESTION 4

4. Identify if the following statements are TRUE or FALSE. (8)
- 4.1. All materials expand when heated and contract when cooled. (1)
- 4.2. Metals are typically good conductors of heat and electricity. (1)
- 4.3. Density is a measure of how much mass is contained in a given volume of a substance. (1)
- 4.4. The pH scale measures how strong an acid or base is. (1)
- 4.5. The melting point of a substance is the temperature at which it changes from a solid to a liquid. (1)
- 4.6. Strength is a property that determines how well a material can resist being broken or deformed. (1)
- 4.7. Filtration is a method used to separate a mixture of a solid and a liquid. (1)
- 4.8. Sour is one of the tastes that the human tongue can sense. (1)

(8)

## QUESTION 5

5. Give one word to describe the following: (5)
- 5.1. Strong \_\_\_\_\_ will not bend, break, or shatter easily. (1)
- 5.2. A very good conductor of electricity that can be shaped into jewelry. \_\_\_\_\_ (1)
- 5.3. Substances that taste bitter and feel soapy, are \_\_\_\_\_ (1)
- 5.4. Materials that cannot carry an electric current are called \_\_\_\_\_ (1)
- 5.5. Many fizzy cold drinks are in cans made from \_\_\_\_\_ (1)

(5)



© DesigningMinds

4

Test Total: 50  
 Number of pages: 10

Dm

# Grade 7 Natural Science June Test

## QUESTION 5: POLLINATION

5. The following statements describe the process of pollination. Number them from 1 to 8 in the correct order. (8)

Process	Number
The insect arrives on the flower to collect nectar. This is a sweet liquid which makes perfect insect food.	2
The flower's fragrant scents and the petal's bright colours attract an insect.	1
Part of this pollen travels down the style and then into the ovary.	6
After the insect is done feeding on that flower's nectar, it goes on to collect nectar from another flower.	4
As the insect feeds on the nectar in the new flower, the pollen stuck to the insect from the first flower rubs off onto the female parts of the second flower (the stigma).	5
The ovules of the flower turn into seeds which will then be dispersed so that new plants will be able to grow somewhere else.	8
As the insect is gathering the nectar, it rubs against the anthers, which rub pollen onto the insect.	3
The tiny piece of pollen joins onto an ovule in the ovary. The plant has now been fertilized.	7

## QUESTION 6: SEXUAL REPRODUCTION

6. Complete the paragraph by filling in the missing words.

Humans are mammals, which means that reproduction requires cell: and a female. Male reproductive cells are produced in the a) \_\_\_\_\_ female reproductive cells are produced in the b) \_\_\_\_\_. Through the female cervix, and the egg cell moves through the c) \_\_\_\_ Fertilisation takes place in the d) \_\_\_\_\_. If the egg is not fertilised, it is expelled from the female body through a process called e) \_\_\_\_\_.

5

## QUESTION 7: PERIODIC TABLE

7.1. Match the elements in Column A with their uses. Write your answer in the grid below.

COLUMN A (ELEMENT)	COLUMN B (USE)
1. Oxygen (O)	a) Used to make steel
2. Hydrogen (H)	b) Found in the air
3. Carbon (C)	c) Used as a fuel
4. Copper (Cu)	d) Essential for life
5. Calcium (Ca)	e) Found in the earth

1.	2.	3.
----	----	----

7.2. What are the three main categories of elements?

7.3. Identify if the following elements are metals or non-metals.

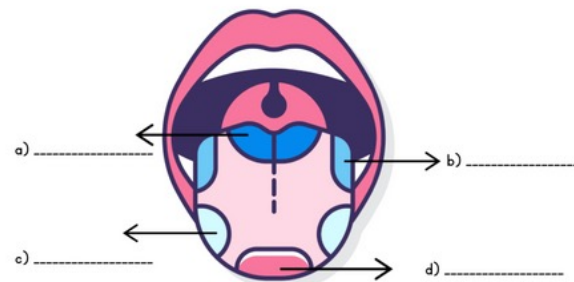
- a) Oxygen - \_\_\_\_\_  
 b) Iron - \_\_\_\_\_  
 c) Silicon - \_\_\_\_\_  
 d) Aluminium - \_\_\_\_\_

6

## QUESTION 10: ACIDS, BASES & NEUTRALS

10.1. What can be used as an indicator to test for acids and bases? (1)

10.2. Label the four different tastes that a human tongue can easily identify. (4)



10.3. Classify the following substances as acids, bases, or neutrals: (4)

- a) Vinegar: \_\_\_\_\_  
 b) Lemon juice: \_\_\_\_\_  
 c) Baking soda solution: \_\_\_\_\_  
 d) Water: \_\_\_\_\_

10.4. Acids usually present as having a \_\_\_\_\_ taste and a \_\_\_\_\_ feeling. (2)

10.5. A base usually represents having a \_\_\_\_\_ taste and a \_\_\_\_\_ feeling. (2)

(13)  
GRAND TOTAL: 70

9

DesigningMinds

- The biosphere
- Biodiversity
- Sexual reproduction
- Periodic Table
- Properties of materials
- Separating mixtures
- Acids, bases and neutrals

(12)

Test Total: 70  
Number of pages: 12



# Grade 7 Mathematics Term 2 Test

## QUESTION 3: INTEGERS

3.1. Fill in the missing values of the following number patterns. (6)

a)  $-28; \dots; -20; \dots; -16$

b)  $24; 12; 0; \dots; \dots$

c)  $-36; -25; -16; \dots; \dots$

3.2. Write the correct sign between the numbers: greater than, less than or = equal to. (3)

a)  $-30 \dots 30$

b)  $-100 \dots 101$

c)  $-26 \dots 26$

3.3. Add the integers without using a calculator. (You may use a number line.) (3)

a)  $(-15) + (-6)$

b)  $-8 + 12$

c)  $(-6) + (-8)$

3.4. Subtract the integers without using a calculator. (You may use a calculator.) (3)

a)  $-10 - 2$

b)  $(-12) - 5$

c)  $7 - (-13)$

3.5. Verify  $a - (-b) = a + b$  for the following values of a and b.  
 $a = 21, b = 18$

©DesigningMinds

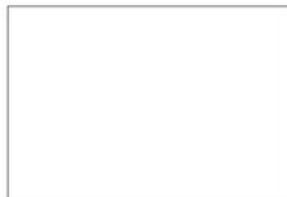
## QUESTION 4: NUMERIC AND

4. Look at the geometric patterns given below



4.1. Have a look at the geometric pattern above

a) What is the next drawing in the pattern?



b) Describe the pattern in words. (2)

-----

c) Complete the table below. (3)

Number of picture	1	2	3	4	5
Number of lolly sticks	4	8			

d) Write a number sentence to describe this pattern. (1)

-----

©DesigningMinds

6

## MEMORANDUM GR 7 MATHEMATICS T2 TEST

QUESTION	ANSWER	MARKS	LEARNER MARK
<b>QUESTION 1: WHOLE NUMBERS</b>			
1.1.	a) (2 marks) 56, 2, 2, 2, 7 9!, 7, 13 b) (2 marks) HCF = 7 c) (2 marks) LCM = $2^2 \times 7 \times 13$ = $8 \times 7 \times 13$ = $56 \times 13$ = 728	6	
1.2.	12, 24, 36, 48, 60, 72, 84, 96, 108, 120	2	
1.3.	$120 = 1 \times 2 \times 3 \times 4 \times 5 \times 6 \times 8 \times 10 \times 12 \times 15 \times 20 \times 24 \times 30 \times 40 \times 60 \times 120$	4	
		Total: _____/12	
<b>QUESTION 2: EXPONENTS</b>			
2.1.	a) (2 marks) $3^4 a^6$ b) (2 marks) $2^7 c^4$	4	
2.2.	$= \sqrt[3]{1\ 100 - 100}$ $= \sqrt[3]{1\ 000}$ $= 10$	3	
2.3.	$= 8 - 3$ $= 5$	3	
2.4.	$= (6)^3$ $= 216$	2	
		Total: _____/12	
<b>QUESTION 3: INTEGERS</b>			
3.1.	a) 24, 22, 18 b) -12, -24 c) -9, -4	6	
3.2.	a) < b) < c) <	3	

©DesigningMinds

9

- Whole numbers
- Decimals & Fractions
- Integers
- Exponents

Test Total: 80

Number of pages: 13



# Grade 7 Mathematics June Test

## QUESTION 2: DECIMALS AND FRACTIONS

2.1. Complete the following table. (5)

Common fraction	Decimal	Percentage
$\frac{4}{5}$		
	0.55	
		12.5%

2.2. Simplify  $\frac{21}{56}$  (2)

-----

2.3. Complete the table below. (6)

	Simplified fraction	decimal	Percentage
36 minutes of 3 hours	a	b	c
75cm of 5m	d	e	f

2.4. Calculate the following and write the answer in its simplest form

a)  $4\frac{1}{4} + 1\frac{2}{3} - 2\frac{1}{6}$

©Designingminds2024

4.2. Simplify the following ratio  
24 : 36 : 60 (3)

4.3.  $\frac{4}{5} \times 3\frac{1}{3}$  (3)

4.4.  $32L, 3L + 17,807 - 78,528$  (3)

4.5.  $0.072 \div 12$  (2)

©Designingminds2024

8

## QUESTION 5:

5. Answer the following and show ALL calculation

5.1.  $2^2$

5.2. Simplify  $3^2 \times 3^4$  (2)

5.3. What is the value of  $4^3 \div 4^2$ ? (2)

©Designingminds2024

9

- Whole numbers
- Decimals & Fractions
- Integers
- Exponents
- Numeric & Geometric Patterns
- Functions & relationships

Test Total: 100

Number of pages: 15





# Grade 7 Economic Management Sciences June Test

## QUESTION 2: NEEDS AND WANTS

2. Answer True or False. Place a cross over the correct box.
- 2.1. The fundamental difference between needs and wants in the context of the economy is that needs are essential for survival, while wants are desires that enhance the quality of life. (1)  
 True  False
- 2.2. Entertainment and travel falls under the category of basic needs. (1)  
 True  False
- 2.3. Unlimited needs are the main challenge individuals, families and societies face when managing their resources in the economy. (1)  
 True  False
- 2.4. Education is not considered a primary need for families. (1)  
 True  False
- 2.5. The distinction between primary and secondary needs is important in understanding the economy because it helps in making informed choices about resource allocation. (1)  
 True  False

(5)

## QUESTION 3: GOODS AND SERVICES

3.1. What is the difference between a good and a service?

-----  
 -----

3.2. Give two example of services.

-----  
 -----

3.3. Explain how a manufacturer makes a profit.

-----  
 -----



©DesigningMinds

- History of money
- Needs & wants
- Primary & secondary needs
- Goods and services
- Inequality & poverty
- Accounting concepts
- Income & expenses
- Budgets

TOTAL POSSESSIONS	
DEBTS	
TOTAL DEBTS	
NET WORTH	

(35)

## QUESTION 7: BUDGETS

7.1. Read the case study for the Dlamini family and then draw up a monthly budget with the information provided.

Mr. Dlamini works as a sales assistant at a hardware store and earns R14 000 per month. Mrs. Dlamini is a receptionist and earns R9 500 per month. She also tutors students on weekends, which earns her an extra R600 per month. They currently have no savings but would like to start putting money aside for future expenses.



They rent their home for R7 000 per month and spend R1 100 on electricity. Mr. Dlamini pays R3 800 per month for his car, plus R1 700 for petrol. The rest of the family's transport costs come to R650 per month. School fees for their two children amount to R1 000 per month. Their grocery bill is R5 800, and they spend R450 on household goods and R300 on clothing. They budget R750 for entertainment and R700 for incidental expenses such as medical visits and haircuts. Mr. Dlamini also buys bread, milk, and other essentials from his workplace, which costs R900 monthly. Each child receives R200 in pocket money every month.

Draw up a monthly budget for the Dlamini family. (10)

Budget for Dlamini family	

©DesigningMinds

8

6.5. Would a savings account or a fixed deposit account be more suitable for Mr. Nkosi and give the advantages and disadvantages.

-----  
 -----  
 -----  
 -----  
 -----  
 -----  
 -----  
 -----

6.6. Read the case study below and answer the questions.

Mr. Nkosi has been repairing bicycles and Due to high demand, he has decided to start a business. He does not have enough money to cover all his startup costs, so he needs to apply for a loan. The bank manager asks Mr. Nkosi about his net worth, but he is unsure. Help him draw up a Statement of Net Worth.

Mr. Nkosi owns his house, valued at R900 000, but still owes the bank R600 000. He has a motorbike worth R85 000, and he has saved R50 000 in a fixed-term deposit account. His tools are valued at R15 000, while his furniture and other household possessions amount to R25 000. He has R3 500 in cash. His outstanding accounts total R18 000, and he owes R9 500 on his credit cards. Additionally, he rents out a small flat for R1 500 per month.



a) Use the information and complete the table below to draw up a Statement of Net Worth for Mr. Nkosi. (12)

Mr Abraham's Statement of Net Worth for June 2024.	
POSSESSIONS	

©DesigningMinds

7

Test Total: 100  
 Number of pages: 14



# Grade 7 Technology Term 2 Test

## QUESTION 2

2. Complete the sentences by filling in the missing words.
- 2.1. A \_\_\_\_\_ is a large, strong framework built to support a building or bridge. (1)
- 2.2. A \_\_\_\_\_ is a structure that carries water or electricity over a long distance. (1)
- 2.3. A \_\_\_\_\_ is a temporary structure used to support a building while it is being constructed. (1)
- 2.4. Landline phones use \_\_\_\_\_ wires to transmit signals. (1)
- 2.5. Mobile phones use \_\_\_\_\_ signals to transmit data and make calls. (1)
- (5)

## QUESTION 3

3. Indicate whether the following statements are true or false. Write True or false in the space provided.
- 3.1. Steel is a commonly used material for building structures. (1)
- True  False
- 3.2. Mobile phones are typically more expensive than landline phones. (1)
- True  False
- 3.3. A design brief outlines the requirements and constrain (1)
- True  False
- 3.4. Concrete is a flexible material that can be easily molde (1)
- True  False



©DesigningMinds

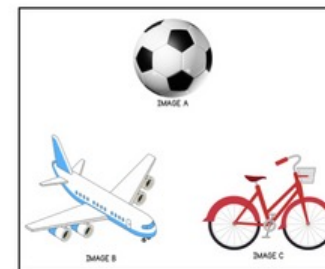
Image 2:



- 6.4. What type of device is shown in the image? \_\_\_\_\_ (1)
- 6.5. Name two features that distinguish this device from a landline phone. (2)
- \_\_\_\_\_
- \_\_\_\_\_
- 6.6. How has this type of device impacted communication in modern society? (1)
- \_\_\_\_\_
- \_\_\_\_\_
- (8)

## QUESTION 7

- 7.1. Look at the images below. Write down the name of each image. Then, identify whether it is a shell, frame or a solid structure. Write your answers on the table provided. (3)



	NAME OF IMAGE	SHELL, FRAME OR SOLID STRUCTURE
IMAGE A		
IMAGE B		
IMAGE C		

- 7.2. Study the pictures below and identify the class of lever that each one represents. (2)

©DesigningMinds

7

## QUESTION 4

4. Study the two images below of different water tanks that follow.



- 4.1. How could you disguise the water tank so that
- \_\_\_\_\_
- \_\_\_\_\_
- \_\_\_\_\_

- 4.2. What two materials would you recommend the water tank be built from? (2)
- \_\_\_\_\_
- \_\_\_\_\_

- 4.3. Name two methods of strengthening used in both water tanks above. (2)
- \_\_\_\_\_
- \_\_\_\_\_
- (5)

©DesigningMinds

4

- Structures - shell, frame, solid
- Case studies
- Single point perspective drawing

Test Total: 50

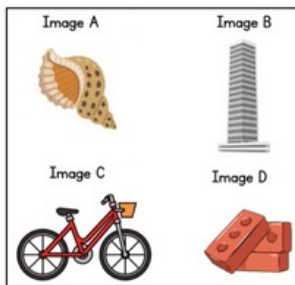
Number of pages: 10

Dm

# Grade 7 Technology June Test

## QUESTION 1

1.1. Study the images below. Fill in the table below by writing down the name of each image. Then, identify if it is a shell, frame, or solid structure and if it is man-made or natural. (12)



	Name of image	Classification of structures	Man-made or natural
Image A			
Image B			
Image C			
Image D			

1.2. Provide a definition for a structure.

-----

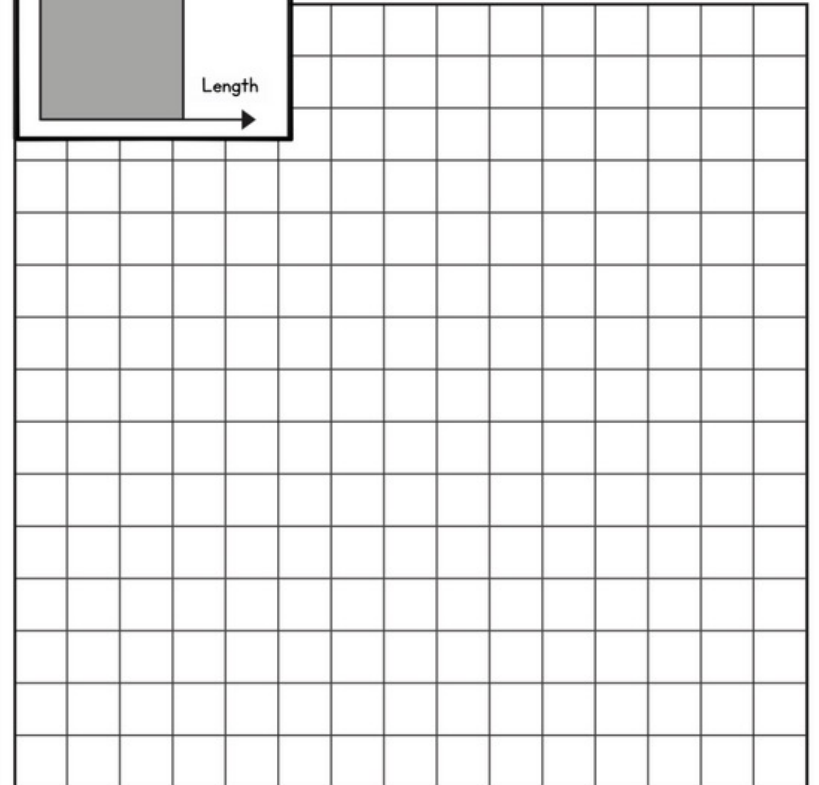
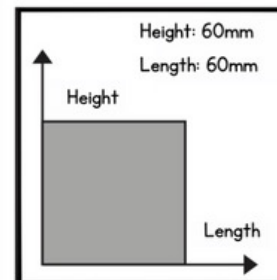
1.3. Why do you think technology should be taught at school?

-----

©DesigningMinds

## QUESTION 6

6.1. Convert the following 2D front view of a cube to create an oblique drawing. Use the grid block provided. (7)



©DesigningMinds

6

## QUES

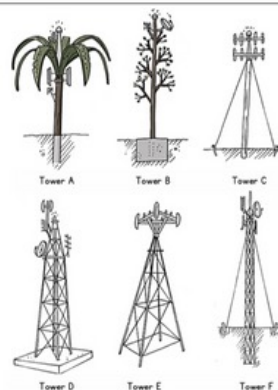
3. Match Column A with Column B. Write on grid below.

Column A	Column B	
3.1. Fulcrum	a) Prevents	
3.2. Insulation	b) Circular c	
3.3. Pulley	c) Point wh	
3.4. Spur gear	d) Used to l	
3.5. Compression	e) Force th	
3.1.	3.2.	3.3.

## QUES

4.1. Study the images and text below and answer the questions that follow.

Design considerations refer to factors that must be taken into account when creating structures like cell phone towers, bridges, buildings, or power stations. These include the intended function of the structure, the cost involved, and the potential impact on people and the environment.



4.1. Why do you think tower A was designed to look like a tree? (2)

©DesigningMinds

4

- Design process
- Simple mechanisms
- First, second- & third-class levers
- Mechanical advantage
- Pneumatics and hydraulics
- Communication skills
- Structures

Test Total: 60

Number of pages: 11

